

EQUINE RESIDENCE IS NO
Fairytale

EQUINE
RESIDENCE

HIS WHISKERS DROOPED.

HIS NOSE TWITCHED.

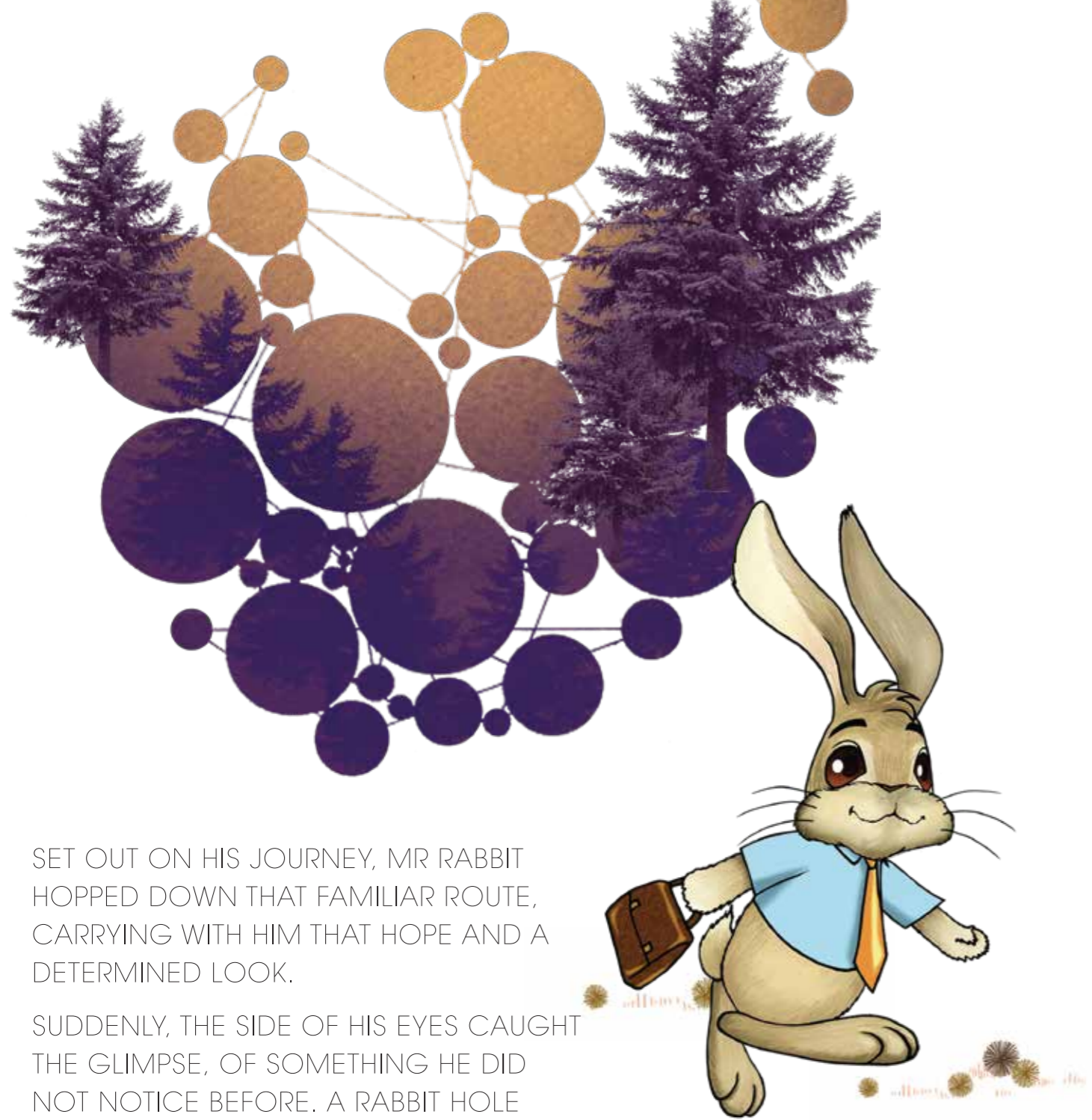
MR. RABBIT WASN'T SO CHEERFUL IN THE CITY.

HIS INITIAL IDEA OF BEING NEAR THE OFFICE DID NOT TURN OUT SO WELL. THE SPACE CONSTRAINTS, HEFTY PRICE TAGS, AND LACK OF GREENERY REALLY ANNOYED HIM.

"I LIKE THE BIG CITY, BUT I WANT A PEACEFUL AND COMFORTABLE LIFE TOO. THERE HAS GOT TO BE A BETTER PLACE TO STAY. SOMEWHERE TO RETREAT TO, AT THE END OF THE DAY," HE THOUGHT.

"I'VE GOT TO FIND A WAY," HE SAID. AND THAT'S EXACTLY WHAT HE DID.





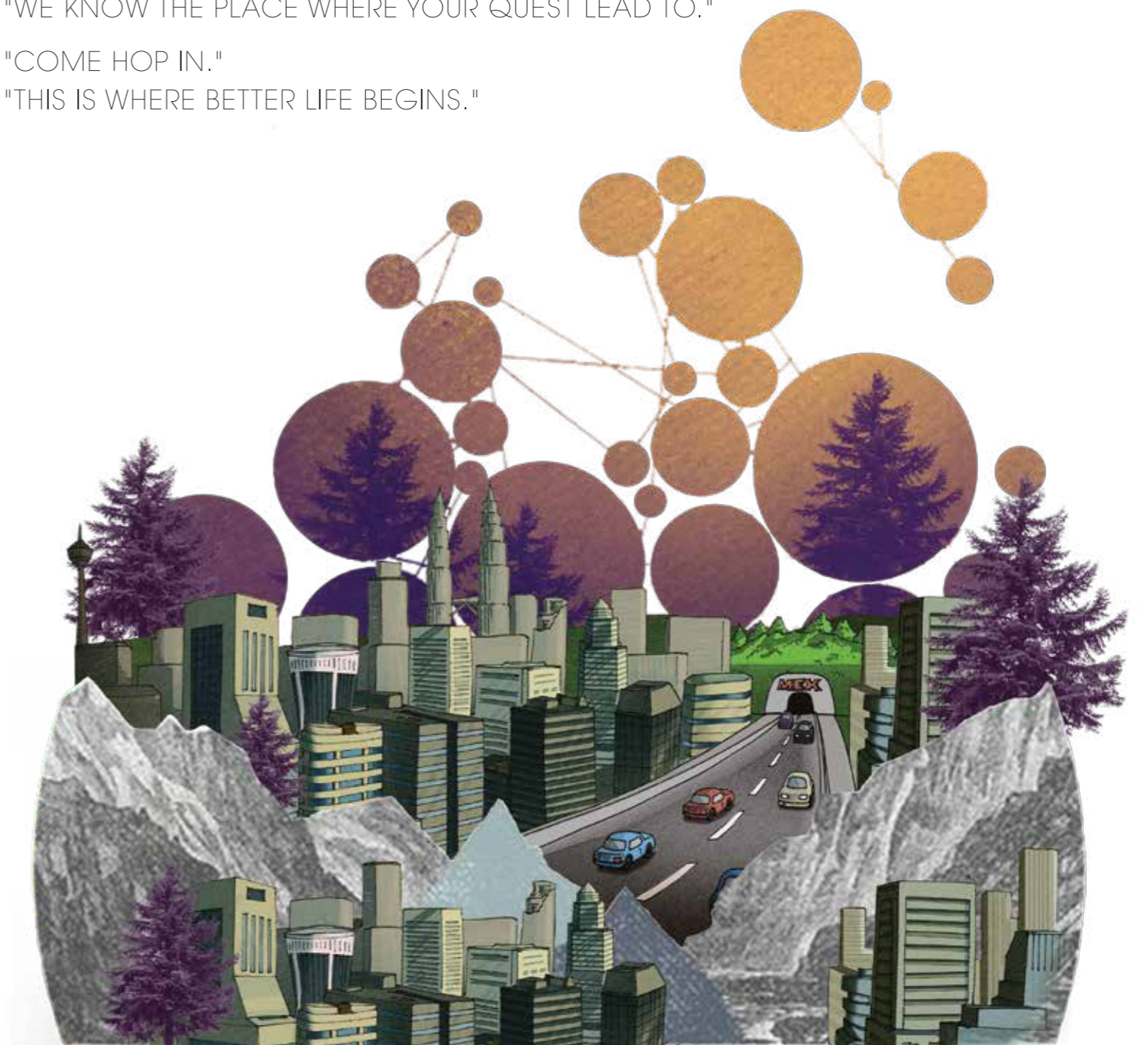
SET OUT ON HIS JOURNEY, MR RABBIT HOPPED DOWN THAT FAMILIAR ROUTE, CARRYING WITH HIM THAT HOPE AND A DETERMINED LOOK.

SUDDENLY, THE SIDE OF HIS EYES CAUGHT THE GLIMPSE, OF SOMETHING HE DID NOT NOTICE BEFORE. A RABBIT HOLE NEAR THE HIGHWAY.

HIS EARS PERKED.
HIS EYES WIDENED.

AS THE TREES AROUND HIM WHISPER THESE WORDS:
"WE KNOW THE PLACE WHERE YOUR QUEST LEAD TO."

"COME HOP IN."
"THIS IS WHERE BETTER LIFE BEGINS."



MR RABBIT HOPPED INTO THE RABBIT HOLE AND EMERGED ON THE OTHER END.

A BREATH OF FRESH AIR, CLEAR BLUE SKY, A SIGHT TO BEHOLD!

BEFORE HIM ARE BEAUTIFULLY MANICURED GARDENS, TOWERS OF CLASSY SERVICE APARTMENTS AND SOHOS, PERCHED AMIDST A QUIET SUBURB, ELEGANT CHIC, SUBDUED YET GLAMOUROUS.

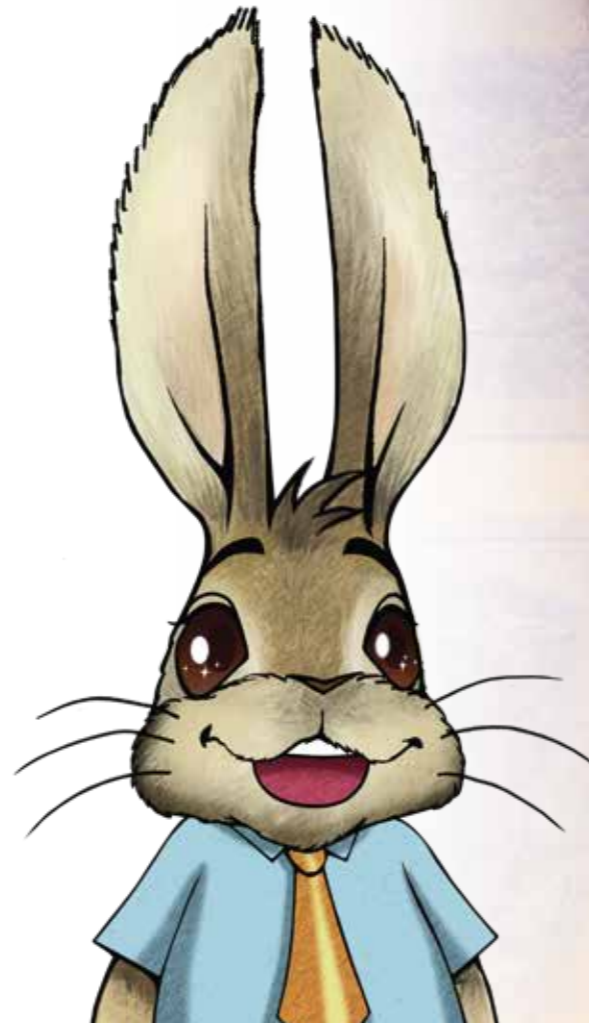
FIRST HIS COTTON TAIL WIGGLED. THEN HIS MOUTH LET OUT A GIGGLE. MR RABBIT LEAPT UP IN JOY!



FOR HE HAS FOUND HIS OWN SANCTUARY, UNTAINTED BY THE HUSTLE AND THE BUSTLE, YET IT IS ONLY A SKIP-AND-A-HOP AWAY FROM THE CITY!

LINKED BY A NETWORK OF HIGHWAYS, AND A HOST OF FACILITIES TO BOAST, IT'S EVEN NEAR A PROPOSED MRT RAIL. BUT BEST OF ALL, AS YOU MAY WELL SEE...

EQUINE RESIDENCE IS NO *Fairytale!*





TOWERS OF CLASSY SERVICE APARTMENTS AND SOHOS, PERCHED AMIDST A QUIET SUBURB, ELEGANT CHIC, SUBDUED YET *Glamorous.*

Combining classic and contemporary design, Equine Residence has a collection of studio, 2, 3 and 4 bedrooms properties, residents' only communal facilities and lifestyle duplex commercial/retail spaces. This 5-acre development is conveniently located in the heart of Equine Park, where schools, bustling food stalls, shopping mall, big-box stores, banks, medical, general services and amenities are all within walking distance.

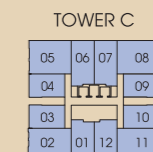
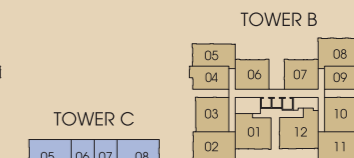
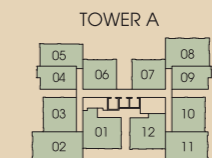


LANDSCAPE *Masterplan*



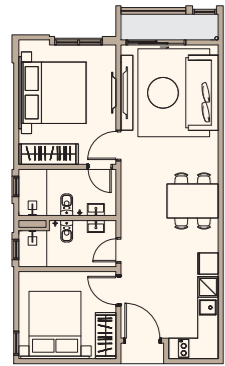
COMMON FACILITIES LEVEL 6

- 1. GYM ROOM
- 2. FUNCTION ROOM
- 3. NURSERY ROOM
- 4. READING ROOM
- 5. SWIMMING POOL AREA
- 6. AQUA GYM AREA
- 7. JACUZZI AREA
- 8. KIDS POOL AREA
- 9. OUTDOOR GYM AREA
- 10. PLAYGROUND AREA
- 11. PLAY LAWN AREA
- 12. BBQ TERRACE AREA
- 13. HALF BASKETBALL COURT AREA
- 14. MAZE GARDEN AREA
- 15. REFLEXOLOGY PATH AREA
- 16. LAWN AREA
- 17. GARDEN PARTY TERRACE AREA
- 18. GARDEN PARTY PAVILION AREA
- 19. FOUNTAIN AREA

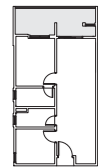


TOWER A & B (SERVICE APARTMENT)

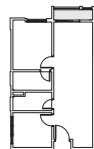
Type B1 04 09 04 09
Built Up: 59 sqm / 635 sq.ft.



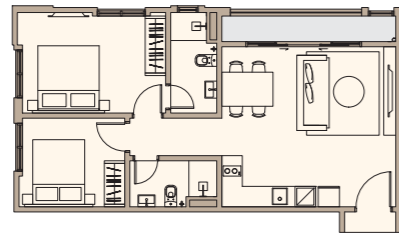
Type B1-P 04 09
Built Up: 69 sqm / 743 sq.ft.



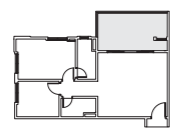
Type B1-Q 04 09 04
Built Up: 59 sqm / 635 sq.ft.



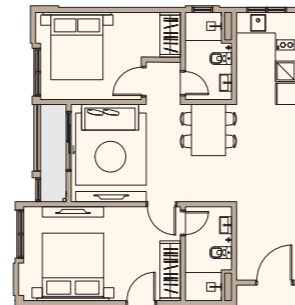
Type B2 05 05
Built Up: 66 sqm / 710 sq.ft.



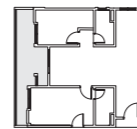
Type B2-P
Built Up: 76 sqm / 818 sq.ft.



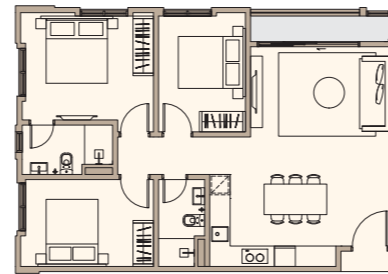
Type B3 06 07 06 07
Built Up: 68 sqm / 732 sq.ft.



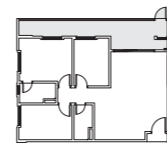
Type B3-P
Built Up: 79 sqm / 850 sq.ft.



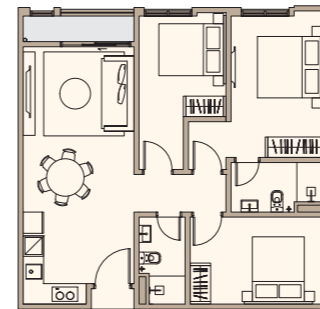
Type C 11 02
Built Up: 83 sqm / 893 sq.ft.



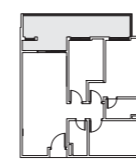
Type C-Q
Built Up: 97.85 sqm / 1053 sq.ft.



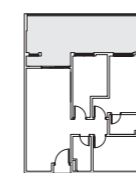
Type C1 03 10 03 10
Built Up: 78 sqm / 840 sq.ft.



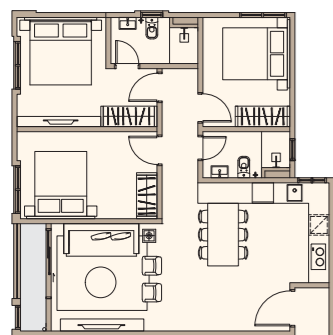
Type C1-P 03 10
Built Up: 92 sqm / 990 sq.ft.



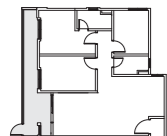
Type C1-Q 03 10
Built Up: 104 sqm / 1119 sq.ft.



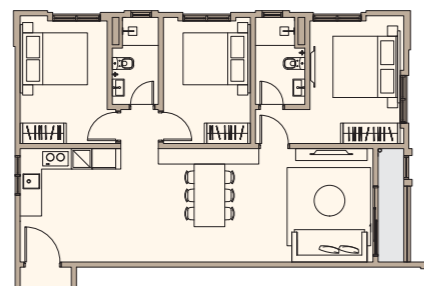
Type C2 12 01
Built Up: 81 sqm / 872 sq.ft.



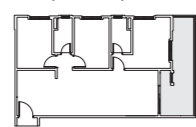
Type C2-P
Built Up: 92 sqm / 990 sq.ft.



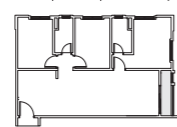
Type C3 08 08
Built Up: 84 sqm / 904 sq.ft.



Type C3-P 08
Built Up: 96.69 sqm / 1041 sq.ft.



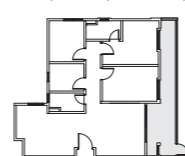
Type C3-Q 08
Built Up: 84 sqm / 904 sq.ft.



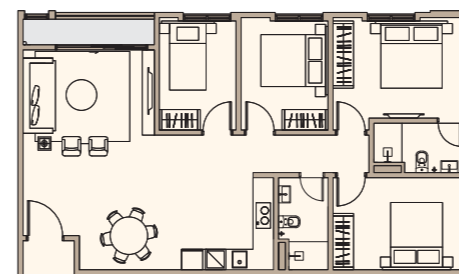
Type D 01 12
Built Up: 90 sqm / 969 sq.ft.



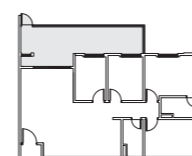
Type D-P
Built Up: 103 sqm / 1109 sq.ft.



Type D1 02 11
Built Up: 98 sqm / 1055 sq.ft.



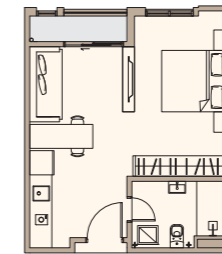
Type D1-P
Built Up: 117.62 sqm / 1266 sq.ft.



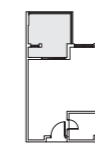
TOWER C (SOHO)

FLOOR Plans

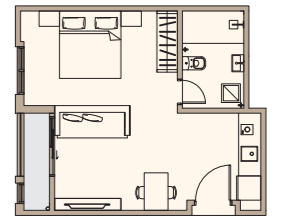
Type A 03 04 09 10
Built Up: 42 sqm / 452 sq.ft.



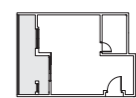
Type A-P
Built Up: 50 sqm / 538 sq.ft.



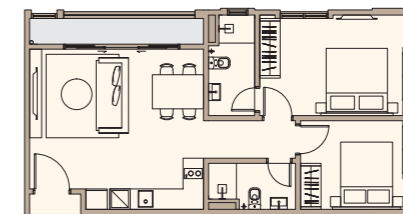
Type A1 01 06 07 12
Built Up: 42 sqm / 452 sq.ft.



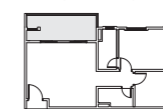
Type A1-P
Built Up: 50.60 sqm / 545 sq.ft.



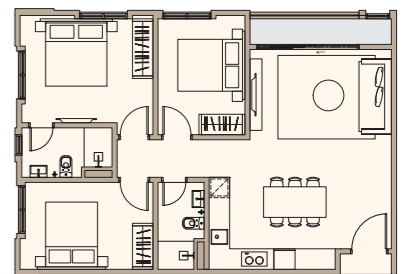
Type B 02 11
Built Up: 65 sqm / 700 sq.ft.



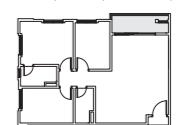
Type B-P
Built Up: 70.78 sqm / 762 sq.ft.



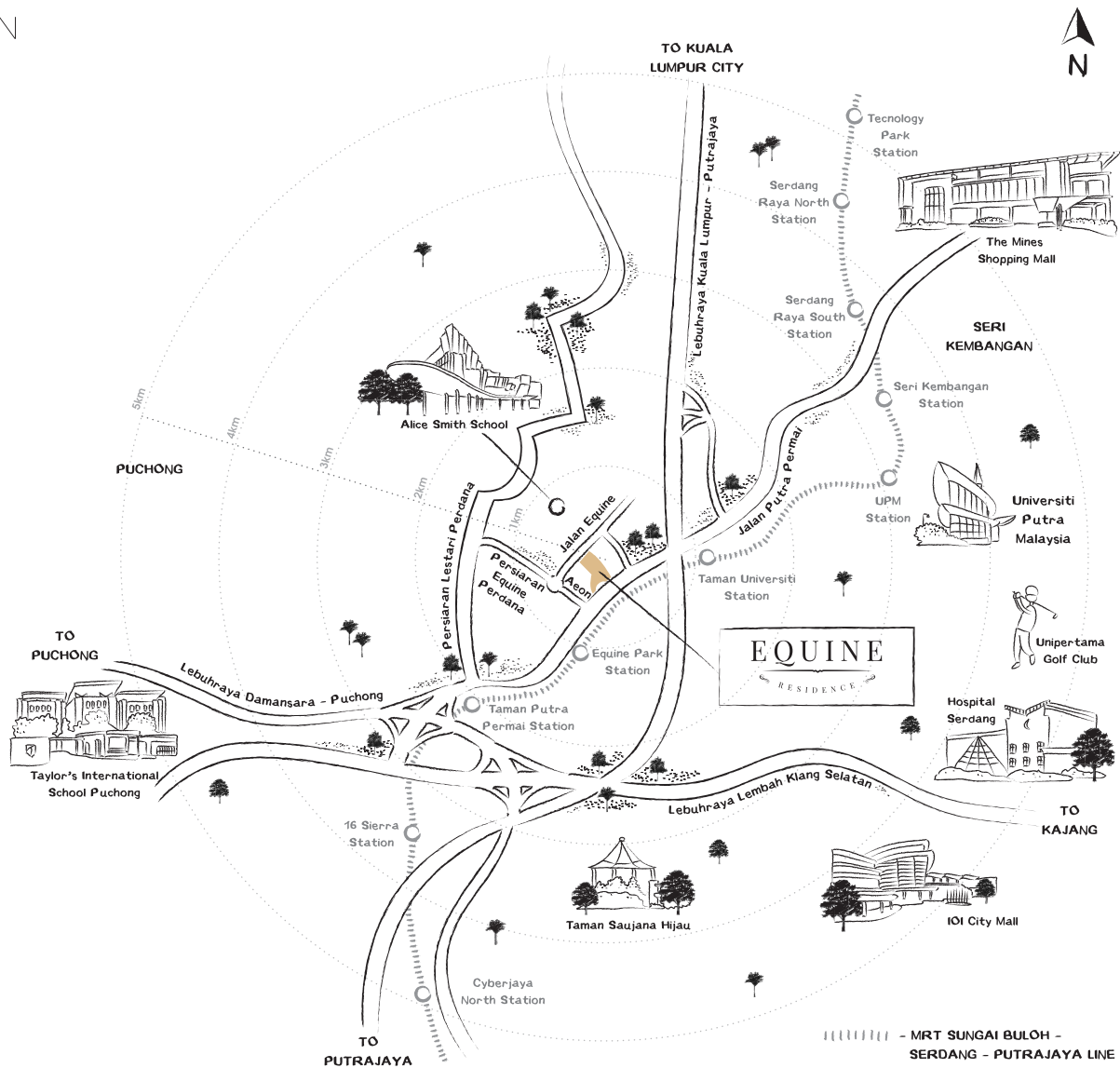
Type C 05 08
Built Up: 83 sqm / 893 sq.ft.



Type C-P
Built Up: 85 sqm / 915 sq.ft.



LOCATION
Map



Summit View Development Sdn Bhd (740808-P)
A subsidiary of Beverly Group Sdn Bhd

Etiqa Twins Tower 2, Level 13 Unit A,
No.11 Jalan Pinang, 50450 Kuala Lumpur

Tel: 03-21612345

Fax: 03-21622345

Web: www.beverlygroup.com.my

03-8938 9879

A development by:



In collaboration with:



Developer License No.: 14578-1/12-2018/0967 (L) | Validity From: 21/12/2016 - 20/12/2018 | Advertising & Sales Permit No.: 14578-1/12-2018/0967 (P) | Validity From: 21/12/2016 - 20/12/2018 | Approving Authority: Majlis Perbandaran Subang Jaya | Building Plan Reference Number: MPS/BGN/600-1/10/4(BP6-16)(20) | Tenure: Leasehold 99 years (Expiry 18 September 2093) | Land Encumbrances: Malayan Banking Berhad | Restriction in Interest: This land cannot be transferred, charged, without prior consent from State Authority | Expected Date of Completion: 52 months from Date of SPA | No. of Units: 287 | Type of Property: SOHO | Price from RM327,000(min) - RM672,000(max) | No. of Units: 574 | Type of Property: Service Apartment | Price from RM465,000(min) - RM811,000(max)

The information contained herein is subject to change and cannot form part of an offer or contract. All measurements are approximate and all renderings are artist's impression only. All plans are intended to serve as guide only and are subject to approval by the relevant approving authorities and maybe modified or amended as directed by the approving authorities and / or project consultants. While every reasonable care has been taken in preparing this material, the developer cannot be held responsible for any inaccuracy.